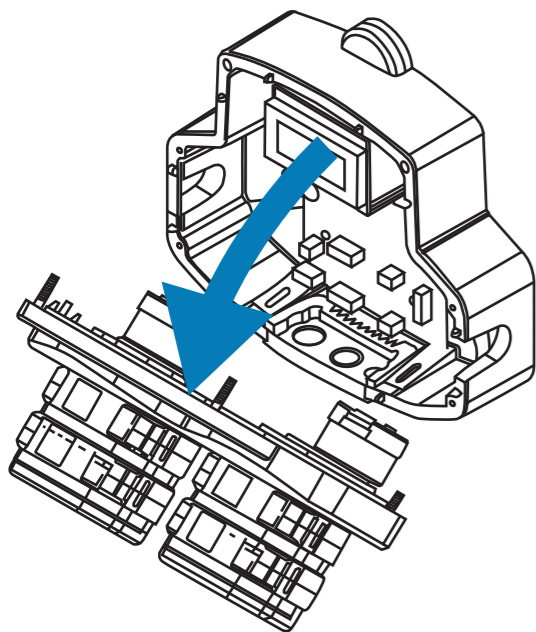
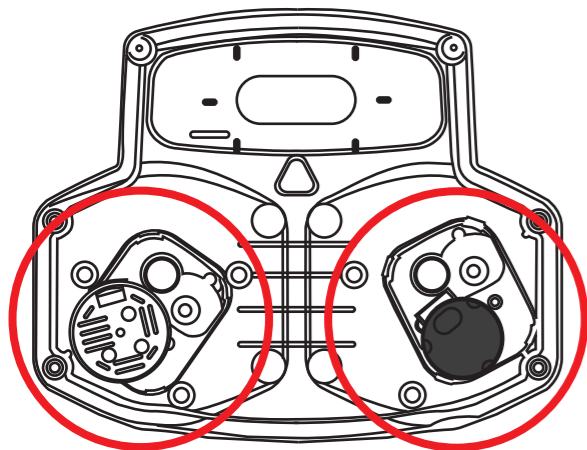


1 Remove the two screws at the top of the case using an M4 Pozi head screwdriver.

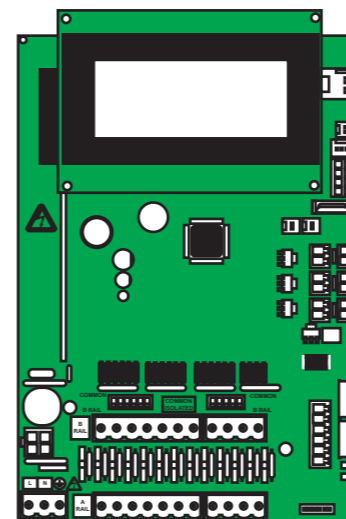


2 Pull the front cover away from the unit to expose the circuit board.

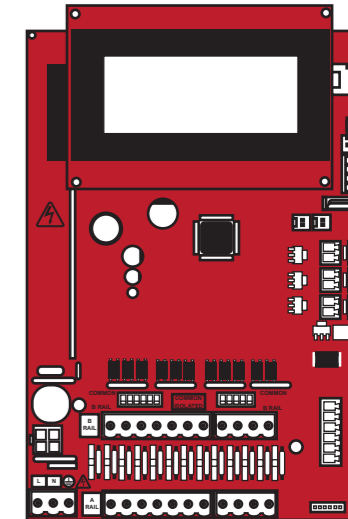
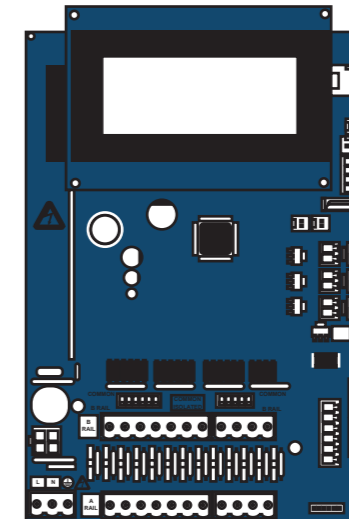


3 Inspect the motors on the back of the front cover. If they have a **BLACK** cover, you have the new motors. If **WHITE**, they are the older model. Make a note of the colour for the next stage.

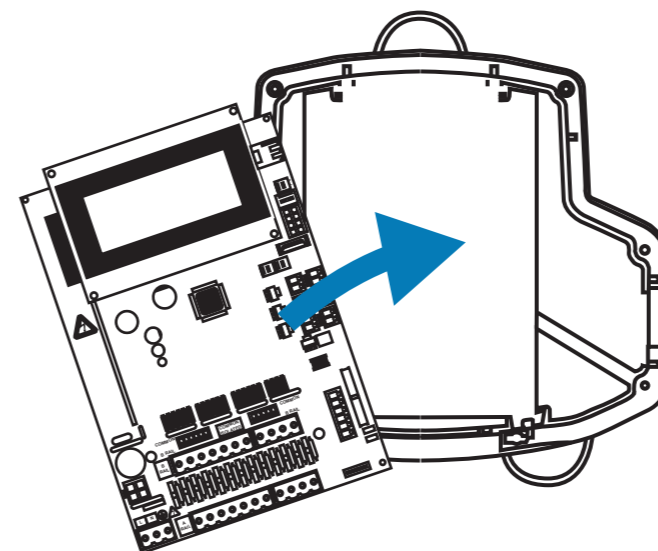
OLD BOARD



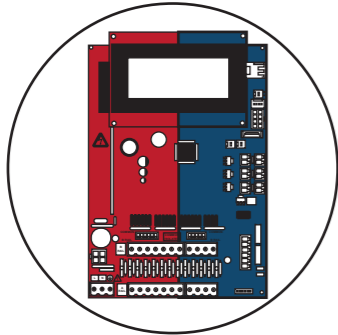
NEW BOARDS



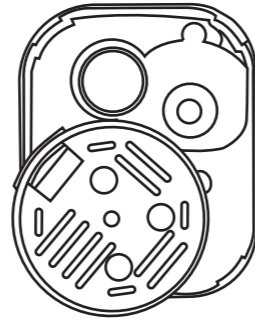
4 If you are replacing the board with a new one, as seen above. Remove the old board using the screws located in the corners. Keep these to one side for later.



5 Replace the old circuit board with the new one from your spares kit. Attaching using the screws from before.



NEW BOARD

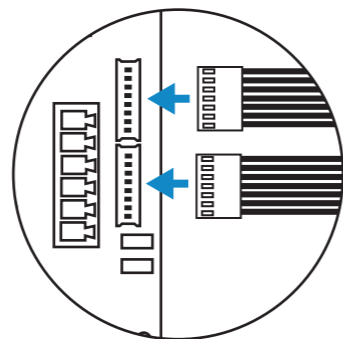


OLD MOTOR

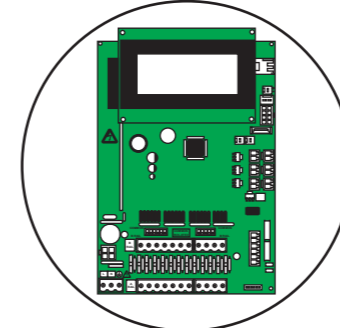
6 If you have a **RED OR BLUE PCB** and the **WHITE** motor. Please use the **7 WAY COLOURED** cable with **RED TAPE**, shown here.



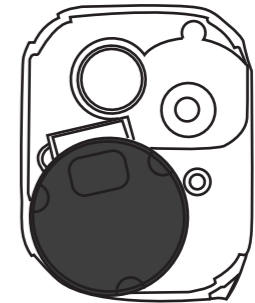
(XSB018)



7 Reconnect the motors with the new connector.



OLD BOARD

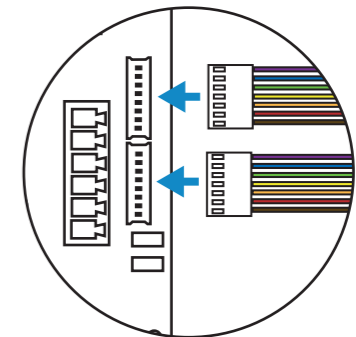


NEW MOTOR

6 If you have a **RED OR BLUE PCB** and the **WHITE** motor. Please use the **7 WAY COLOURED** cable with **RED TAPE**, shown here.



(XSB017)



7 Reconnect the motors with the new connector.