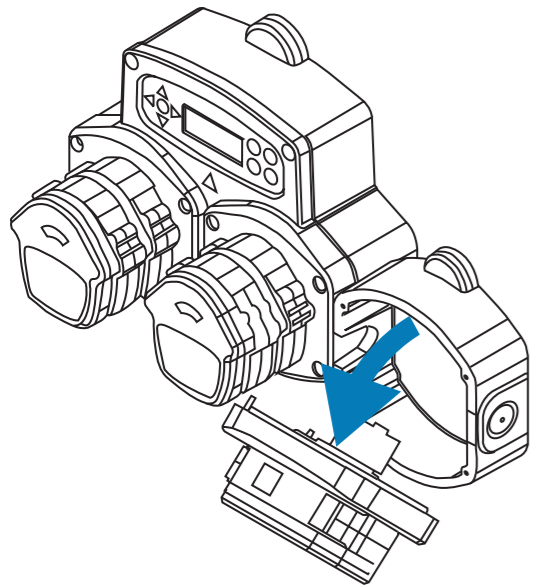
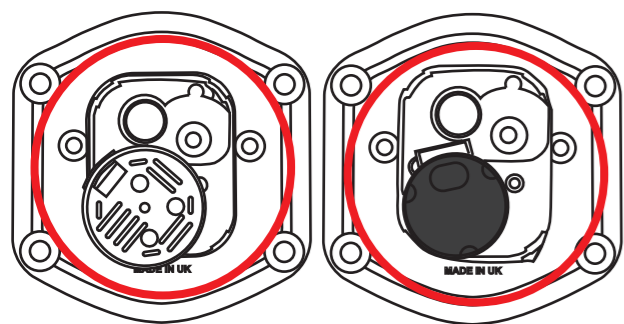


- 1** Remove the four screws in the add on pump enclosure using an M4 Pozi head screwdriver.

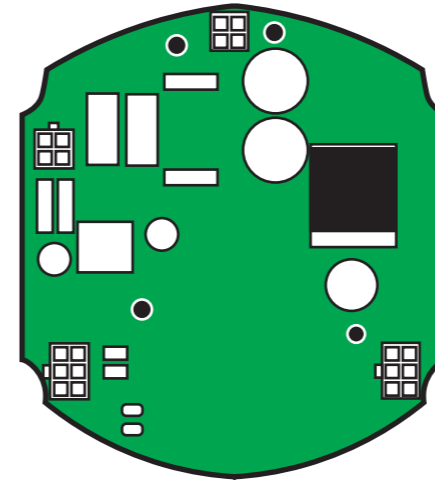


- 2** Pull the front cover away from the unit to expose the circuit board.

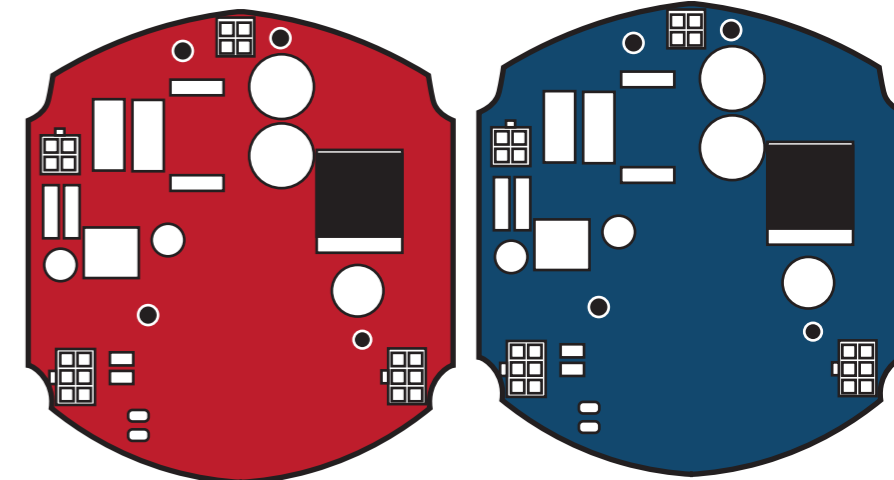


- 3** Inspect the motors on the back of the front cover. If they have a **BLACK** cover, you have the new motors. If **WHITE**, they are the older model. Make a note of the colour for the next stage.

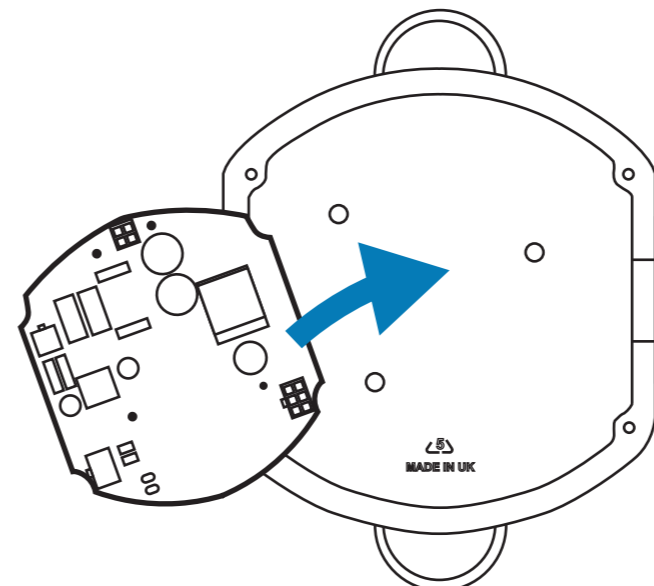
OLD BOARD



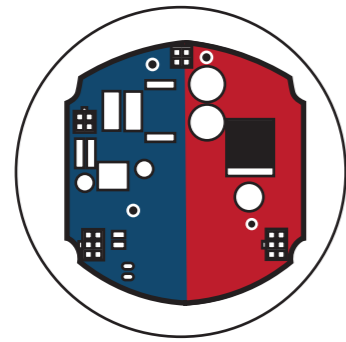
NEW BOARDS



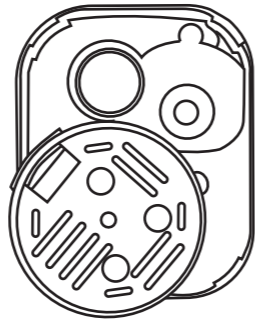
- 4** If you are replacing the board with a new one, as seen above. Remove the old board using the screws located in the corners. Keep these to one side for later.



- 5** Replace the old circuit board with the new one from your spares kit. Attaching using the screws from before.



NEW BOARD



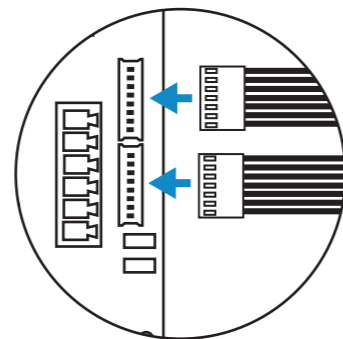
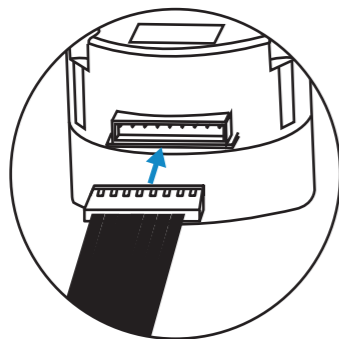
OLD MOTOR

6

If you have a **RED OR BLUE PCB** and the **WHITE** motor. Please use the **8 WAY BLACK** cable with **RED TAPE**, shown below.

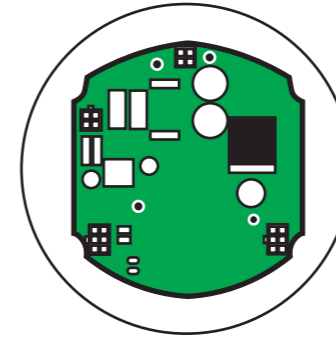


(XSB018)

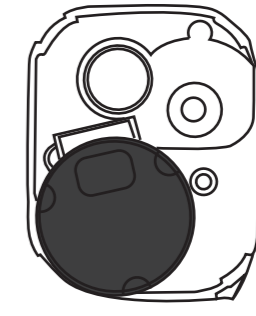


7

Reconnect the motors with the new connector.



OLD BOARD



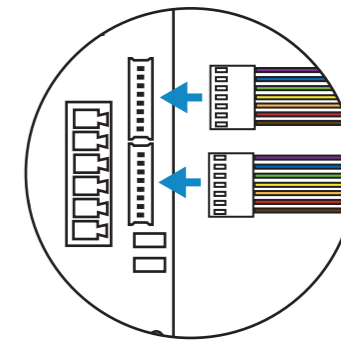
NEW MOTOR

6

If you have a **GREEN PCB** and the **BLACK** motor. Please use the **7 WAY COLOURED** cable with **BLUE TAPE**, shown below.



(XSB017)



7

Reconnect the motors with the new connector.