



## BRIGHTLOGIC IOT

ADVANCED CONNECTIVITY FOR BRIGHTLOGIC LAUNDRY SYSTEMS



### Description

The Brightlogic IoT Module is a retrofit connectivity upgrade designed to modernize existing Brightlogic dosing systems. It enables remote monitoring, configuration, and data logging via a secure Wi-Fi bringing smart capabilities to installations.

### Key Features

- **Retrofit Ready** - Designed for compatibility with current Brightlogic OPL units
- **Remote Access** - Brightwell cloud remote interface
- **Bluetooth Integration** - Bluetooth communication with up to 4 Brightlogic units (Only one module per laundry)
- **Modular Design** - Modular enclosure using standard Brightwell housing

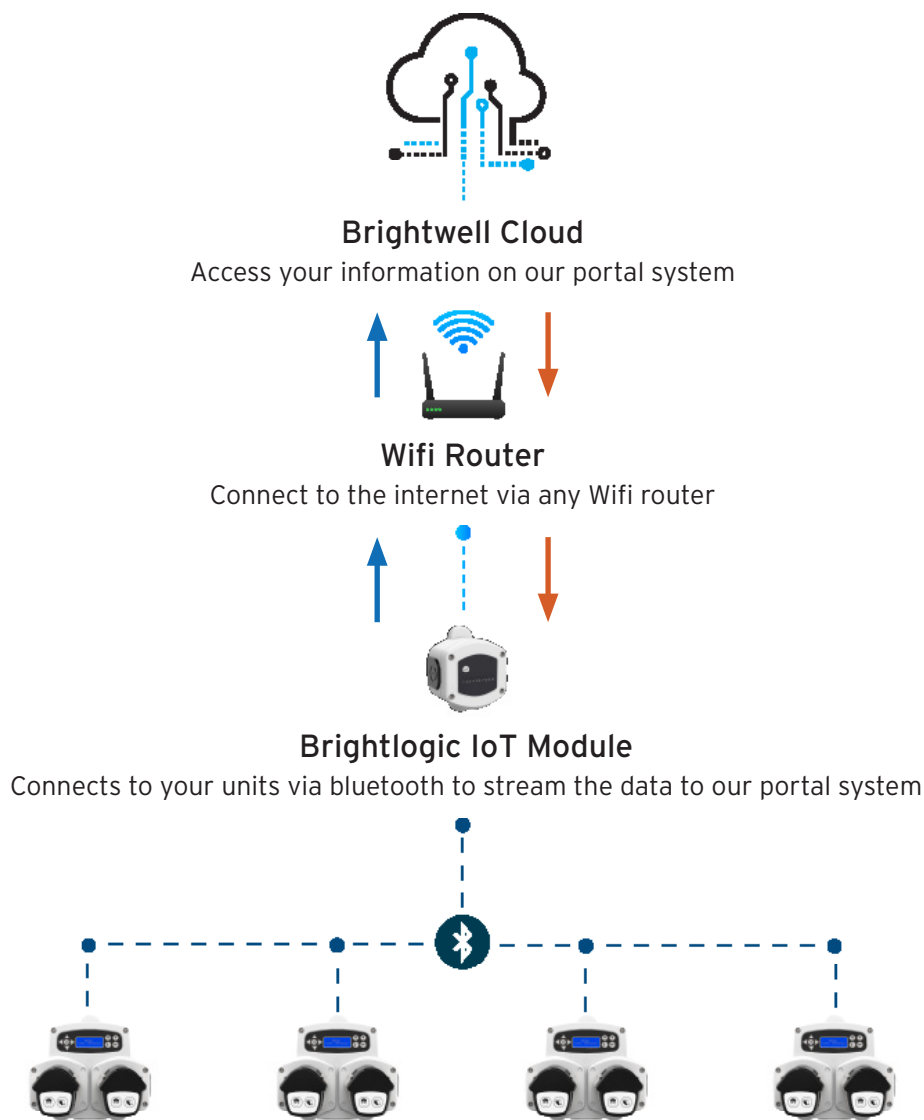
### Technical Specifications

	Value
CONNECTIVITY	Wi-Fi 802.11n / Bluetooth 4.2 / BLE
POWER SUPPLY	24V input (from Brightlogic)
COOLING	5V cooling fan
ENCLOSURE	Polypropylene, IP44
FIRMWARE FEATURES	<ul style="list-style-type: none"> <li>- Automatic detection of up to 4 units (Only one module per laundry)</li> <li>- Communication to units via Bluetooth</li> <li>- Remote logs collection and program configuration.</li> <li>- Communication to cloud via Wi-Fi at the site.</li> <li>- 2.12 (or sup)</li> </ul>

# Technical Specifications

	Value
DATA COMMUNICATION	Supports read/write operations: <ul style="list-style-type: none"><li>- Unit info, config, product data, formulas</li><li>- Calibration, program settings, logs</li></ul>
USE CASES	<ul style="list-style-type: none"><li>- Remote technical support</li><li>- Usage reporting and diagnostics</li><li>- Remote update of customer names, program names</li><li>- Long-term performance and maintenance tracking</li></ul>

## Diagram



## Details

Part Code	Description
A500BLIOT	BRIGHTLOGIC - IOT CONNECTIVITY MODULE, ACCESSORY TO CONNECT UP TO 4 DISPENSERS UNITS